



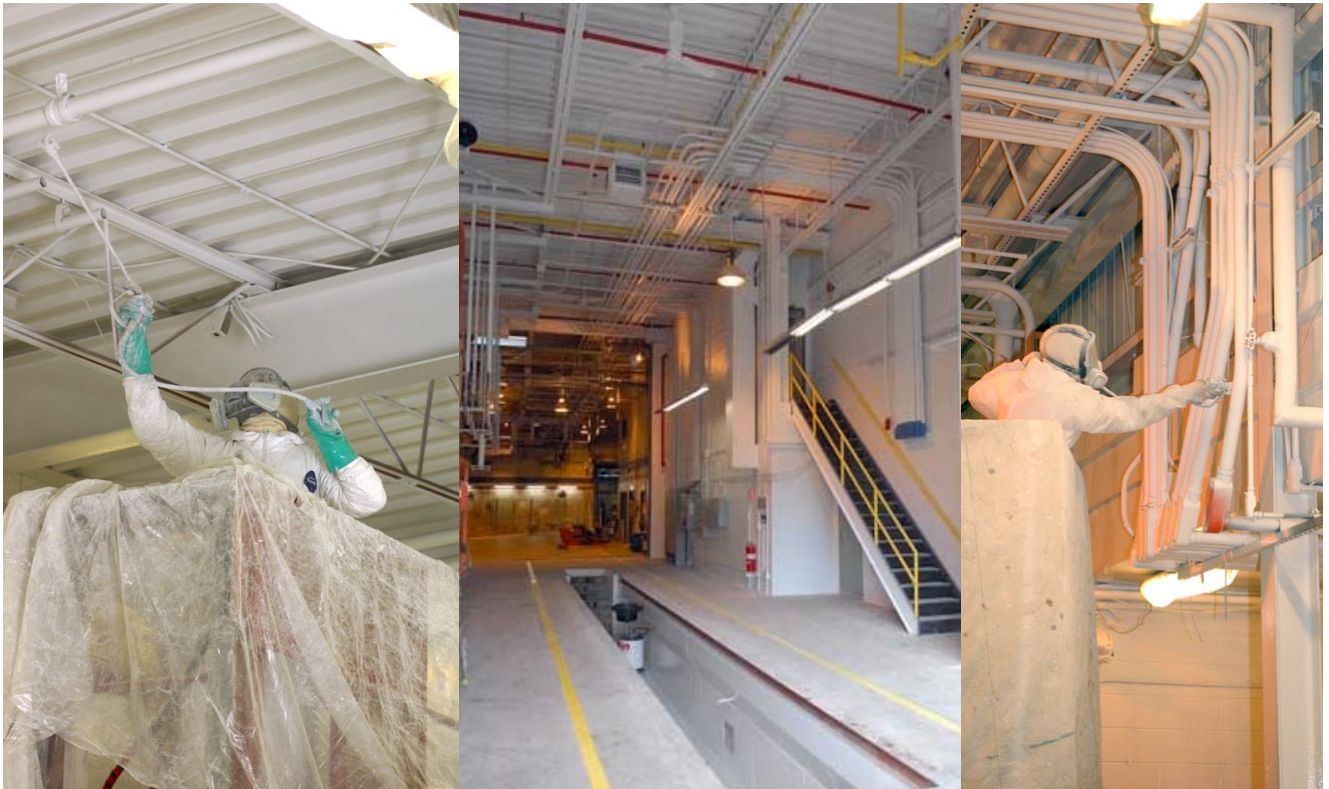
# Industrial Painting

We can expertly prepare and refinish most surfaces to ensure the longevity of the finished work. We have our own sandblasting and hot water powerwashing systems to ensure proper surface preparation, before we begin painting, ensuring the longevity of your finish.

Our experienced painters are WHMIS trained and Fall Arrest and Aerial Lift certified. They can utilize aerial-lift platforms to complete jobs safely and properly. We use top quality primers, paints and have extensive experience spray finishing numerous specialty coatings to maximize the value of our top-notch work.

## Features & Benefits:

- top quality & specialty products used to maximize your investment
- surfaces expertly prepared so longevity of finishes are ensured
- flexible work schedule to meet your business operation needs
- safe and clean work environment



Left: Spray Painting of ceiling at Factory in Ajax.  
Centre: Painted Bus Maintenance facility at GO Transit.  
Right: Spraying GO Transit Bus Wash Facility walls and ceiling.